

# CH-TYPE

ANCHOR HANDLING TUG SUPPLY VESSEL



**MAERSK**  
SUPPLY SERVICE

Maersk Supply Service serves the offshore industry world wide with more than 60 vessels manned by approximately 2000 crew and supported by 220 onshore staff worldwide represented in all main deepwater regions.

The fleet includes craned subsea support vessels, anchor handling tug supply vessels, platform supply vessels and field and subsea support vessels.

Our focus areas are operations in ultra deep water, support of offshore platforms, rigs, barges as well as subsea services. Work scopes include amongst other things:

- Deep water anchor handling and mooring installations
- Subsea support/ROV support/Crane
- Support of renewables industry
- Ploughing/trenching operations
- General supply operations
- Special projects
- Rig moves



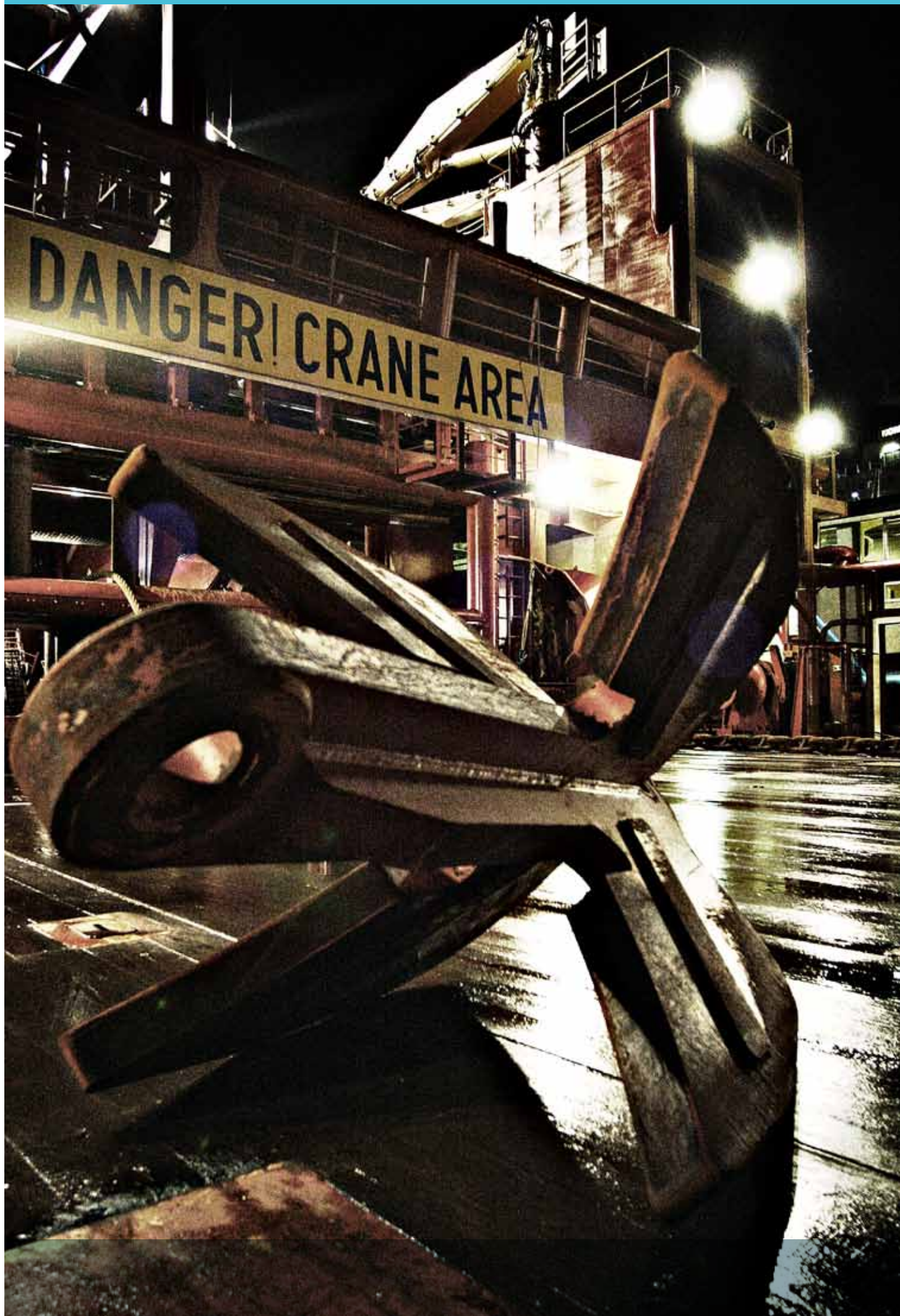




**Vessel names / built:**  
Mærsk Chieftain / 1985  
Mærsk Challenger / 1986

Mærsk Champion / 1986  
Mærsk Chancellor / 1986





# Technical specifications

## Classification

Classification	DNV
	+1A1, Tug Supply Vessel
	ICE-C, SF, E0, TMON
	ICE-1C (Maersk Chancellor)
	Fire Fighter 1, OILREC, DYNPOS-AUT (Maersk Chancellor)
	Canadian Standby certificate (Maersk Challenger and Maersk Chancellor)

## Deadweight/Tonnage

Deadweight	2,350 ts
Gross tonnage	2,880 gt

## Dimensions

Length o.a./p.p.	76.40 m / 66.00 m
Breadth moulded	17.60 m
Depth moulded	9.00 m
Summer draft, max.	6.60 m
Freeboard at max. draft	2.67 m

## Firefighting

FiFi 1, 1,200 m<sup>3</sup>/hour (Maersk Chancellor)

## Accommodation

Capacity	<b>Mærsk Champion:</b>	<b>Maersk Challenger:</b>
	20 persons total incl. crew	21 persons total incl. crew
	15 single cabins	16 single cabins
	1 double cabin	1 double cabin
	1 x 3 man cabin	1 x 3 man cabin
	<b>Mærsk Chieftain:</b>	<b>Maersk Chancellor:</b>
	21 persons total incl. crew	35 persons total incl. crew
	13 single cabins	14 single cabins
	4 double cabins	7 double cabins
		1 x 3 man cabin
		1 x 4 man cabin

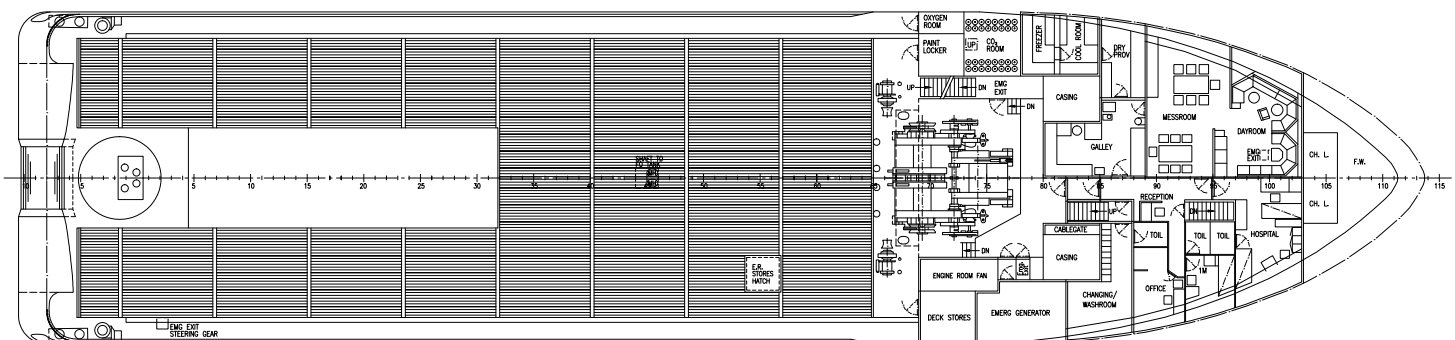
## Standby/Rescue

210 survivors (Maersk Challenger)  
350 survivors (Maersk Chancellor)

## Fast rescue craft

1 x Seabear 23 (Maersk Challenger)  
2 x Seabear 23 (Maersk Chancellor)

## 1st deck





### Towing/Anchor handling equipment

Make	Brattvaag
Type	Waterfall
Drums	2 with spooling device (Mærsk Chieftain)
AH drum	Max. pull 350 ts Capacity 3,100 m x 77 mm wire
Towing drum	Max. pull 350 ts (Mærsk Chieftain) Capacity 3,100 m x 77 mm wire
Drums	3 (Maersk Challenger, Mærsk Champion and Maersk Chancellor)
AH drums	2 x max. pull 250 ts Capacity of each drum 750 m x 76 mm wire
Towing drum	Max. pull 250 ts (Maersk Challenger, Mærsk Champion and Maersk Chancellor) Capacity 1,100 m x 76 mm wire
Chain lockers	2 x 133 m <sup>3</sup>
Shark jaws	2 x 500 ts Karm Fork 2 x 750 ts Karm Fork (Maersk Chieftain)
Stern roller	4.00 m x 2.75 m
Towing pins	2 x 170 ts Karm Fork 2 x 750 ts Karm Fork (Maersk Chieftain)

### MOB/Work boat

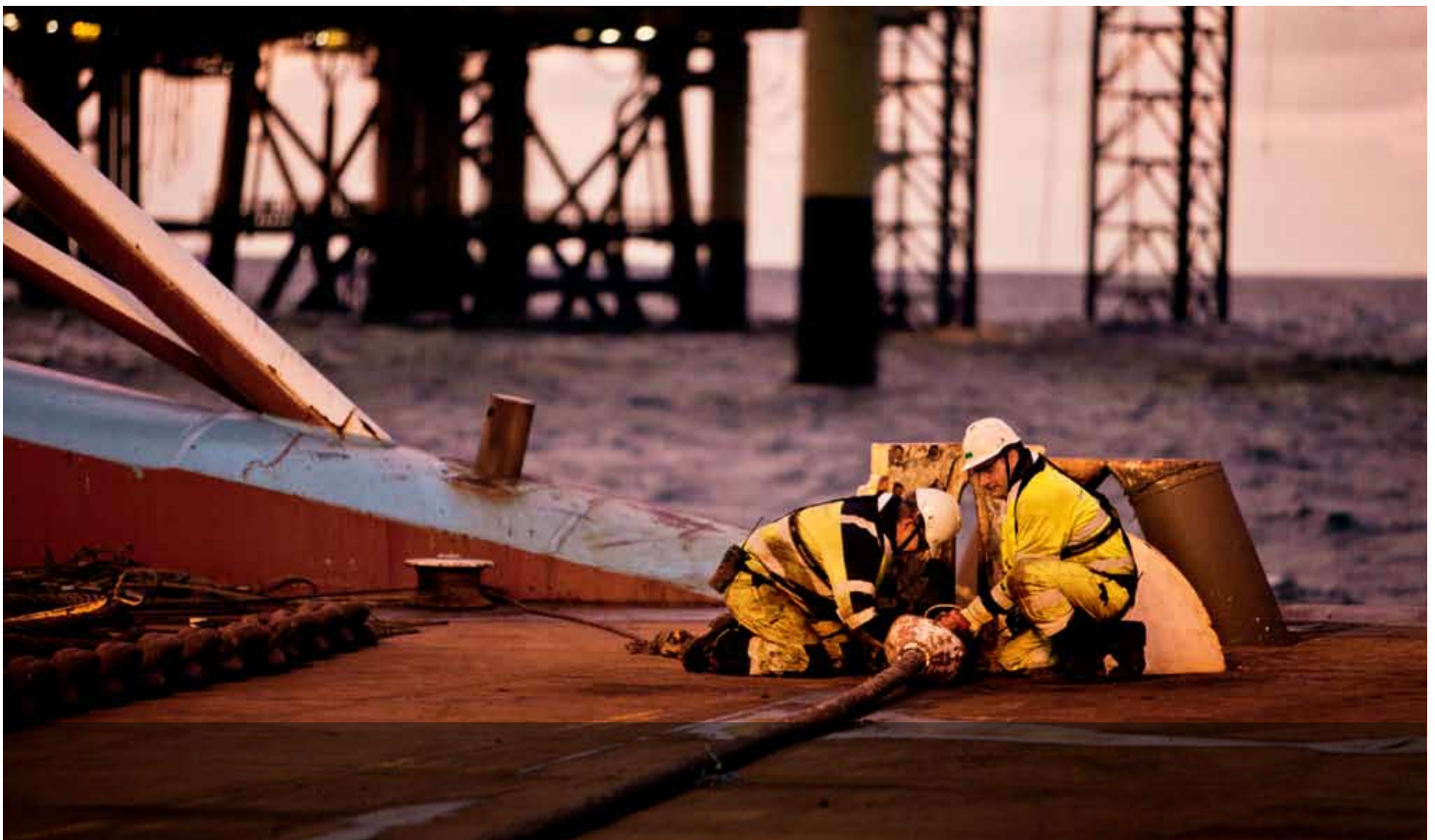
MOB boat	Zodiac
Work boat	Zodiac

### Deck load capacities

Deck load	1,360 ts (Mærsk Chieftain 967 ts)
Deck length	42.20 m
Deck breadth	15.00 m
Deck area	630 m <sup>2</sup>
Deck strength	5 ts/m <sup>2</sup>
Cargo rail height	2.30 m

### Deck equipment

Capstans	2 x 8-12 ts
Cranes	2 ts at outreach 19.00 m (Mærsk Chieftain, Maersk Challenger and Mærsk Champion) 5 ts/1.5 ts at outreach 8.00 m/19.00 m (Maersk Chancellor)
Tugger winches	2 x 10-15 ts



### Propulsion/Bollard pull

Main engines	4 x MAN B&W 28/32
Total BHP	14,400
Bollard pull	160-173 ts
Propellers	2 x controllable pitch with fixed nozzles
Rudders	2 x Spade type
Thrusters forward	2 x 1,200 BHP Tunnel
Thruster aft	1 x 1,200 BHP Tunnel

### Speed/Consumption

Max. speed/consumption	16 knots at abt. 45 ts/24 hours
Eco. speed/consumption	12 knots at abt. 21 ts/24 hours

### Dynamic Positioning

Dynamic positioning	DPS 2 (Maersk Chancellor)
Reference system	DGPS, Laser fan beam, HIPAP (Maersk Chancellor)

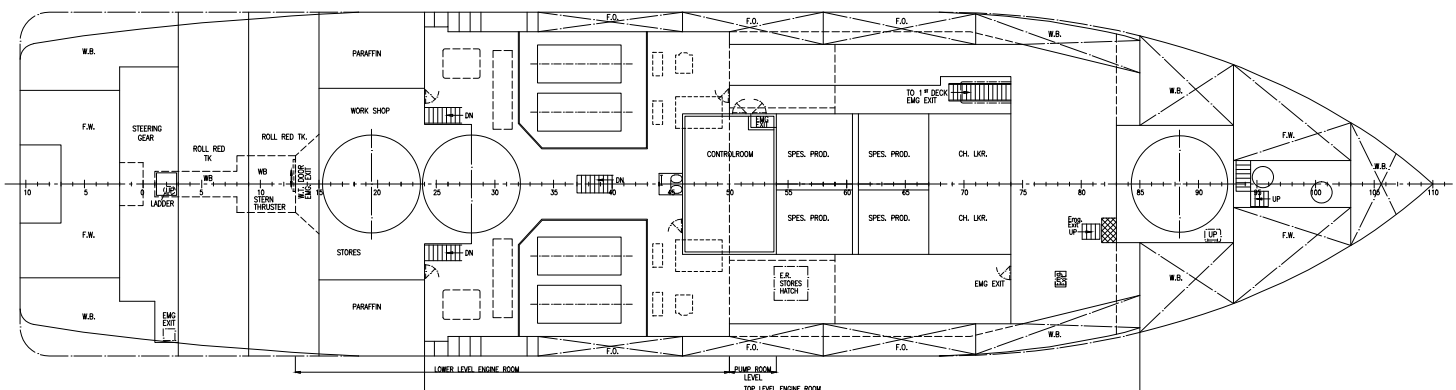
### Liquid capacities

Base oil	178 m <sup>3</sup> (Maersk Challenger and Maersk Chancellor) 213 m <sup>3</sup> (Mærsk Champion)
Brine	209 m <sup>3</sup> (Mærsk Chieftain n/a)
Drill/Ballast water	1,610 m <sup>3</sup> (Mærsk Champion and Mærsk Chieftain) 1,700 m <sup>3</sup> (Maersk Challenger and Maersk Chancellor)
Dry bulk	283 m <sup>3</sup> (Mærsk Chieftain n/a)
Fresh water	600 m <sup>3</sup>
Fuel	1,850 m <sup>3</sup>
Oil based mud	411 m <sup>3</sup> (Mærsk Champion) 620 m <sup>3</sup> (Maersk Challenger and Maersk Chancellor)

### Cargo discharge rates

Base oil	50 m <sup>3</sup> /hour at 10 bar (Mærsk Champion) 75 m <sup>3</sup> /hour at 10 bar (Maersk Challenger and Maersk Chancellor)
Brine	75 m <sup>3</sup> /hour at 10 bar (Maersk Challenger and Maersk Chancellor) 2 x 75 m <sup>3</sup> /hour at 10 bar (Mærsk Champion)
Bulk cargo	2 x 65 ts/hour
Drill water	100 m <sup>3</sup> /hour at 10 bar 2 x 100 m <sup>3</sup> /hour at 10 bar (Mærsk Champion)
Fresh water	100 m <sup>3</sup> /hour at 10 bar 2 x 100 m <sup>3</sup> /hour at 10 bar (Mærsk Champion)
Gas oil	100 m <sup>3</sup> /hour at 10 bar (Mærsk Chieftain) 2 x 100 m <sup>3</sup> /hour at 10 bar
Mud	75 m <sup>3</sup> /hour at 10 bar (Maersk Challenger and Maersk Chancellor) 2 x 75 m <sup>3</sup> /hour at 6 bar (Mærsk Champion)

## Below main deck





Headquartered in Copenhagen, Maersk Supply Service is represented globally with offices in Aberdeen, St. John's, Rio de Janeiro, Cairo, Luanda, Lagos and Perth.

For more information please visit our web site at [maersksupplyservice.com](http://maersksupplyservice.com)



This brochure is intended for general information only.  
Maersk Supply Service makes no warranties about accuracy or completeness of any information contained herein.

